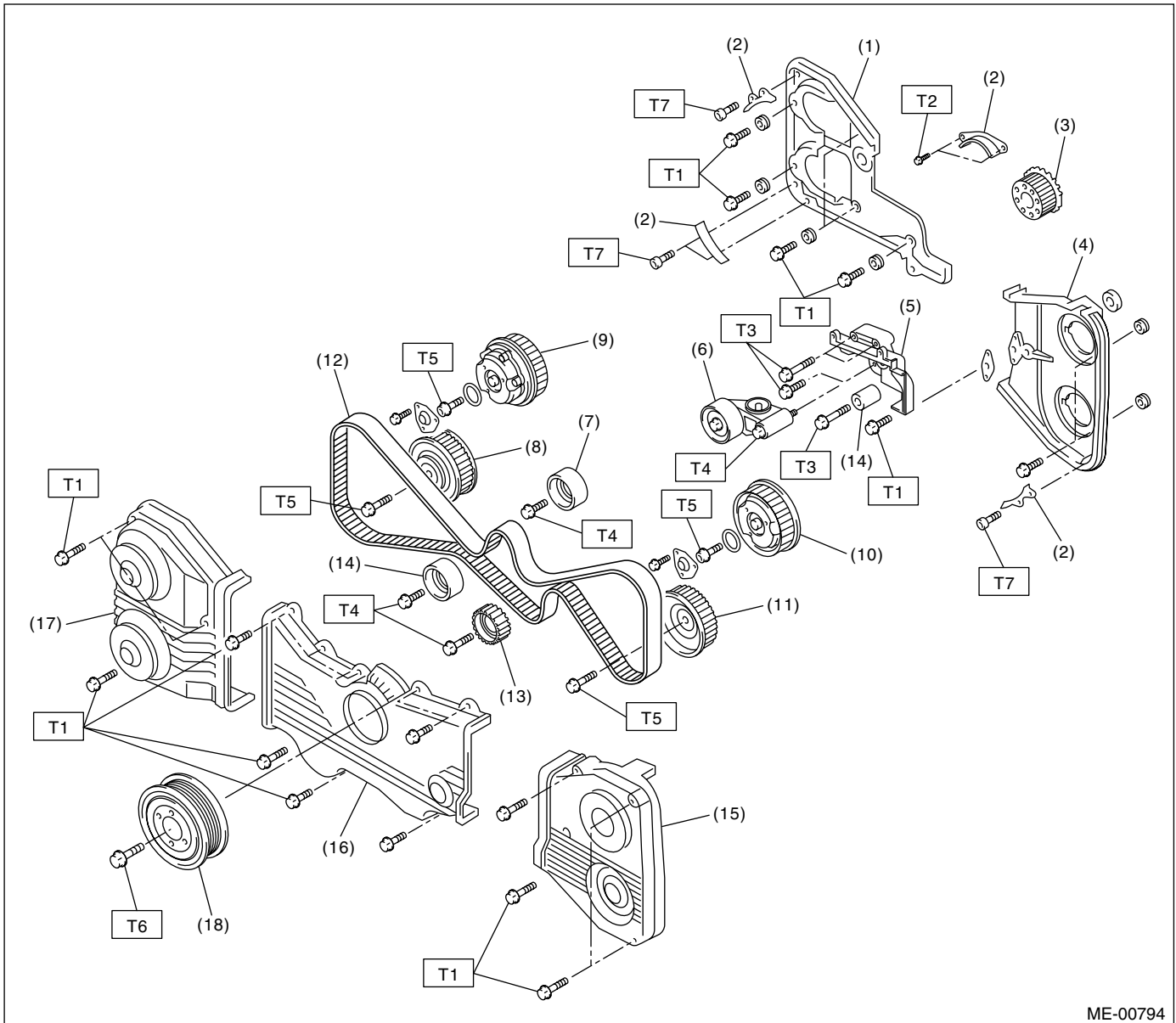


## B: COMPONENT

### 1. TIMING BELT



ME-00794

- |  |                                     |
|--|-------------------------------------|
| (1) Timing belt cover No. 2 (RH)         | (11) Exhaust camshaft sprocket (LH) |
| (2) Timing belt guide                    | (12) Timing belt                    |
| (3) Crankshaft sprocket                  | (13) Belt idler No. 2               |
| (4) Timing belt cover No. 2 (LH)         | (14) Belt idler                     |
| (5) Tensioner bracket                    | (15) Timing belt cover (LH)         |
| (6) Automatic belt tension adjuster ASSY | (16) Front belt cover               |
| (7) Belt idler                           | (17) Timing belt cover (RH)         |
| (8) Exhaust camshaft sprocket (RH)       | (18) Crankshaft pulley              |
| (9) Intake camshaft sprocket (RH)        |                                     |
| (10) Intake camshaft sprocket (LH)       |                                     |

**Tightening torque: N-m (kgf-m, ft-lb)**

**T1: 5 (0.5, 3.6)**

**T2: 10 (1.0, 7)**

**T3: 25 (2.5, 18.1)**

**T4: 39 (4.0, 28.9)**

**T5: <Ref. to ME(STi)-56, INSTALLATION, CRANKSHAFT SPROCKET.>**

**T6: <Ref. to ME(STi)-44, INSTALLATION, CRANKSHAFT PULLEY.>**

**T7: 6.4 (0.65, 4.7)**